

# Main Ave—Downtown Bismarck

201 W. Main Ave—Bismarck, ND  
Lease: \$5.00 psf = \$2,318 mo.



**Taylor Daniel, Commercial REALTOR**  
701.391.4262  
[Taylor@DanielCompanies.com](mailto:Taylor@DanielCompanies.com)

**Bill Daniel, CCIM, Broker**  
701.220.2455  
[Bill@DanielCompanies.com](mailto:Bill@DanielCompanies.com)

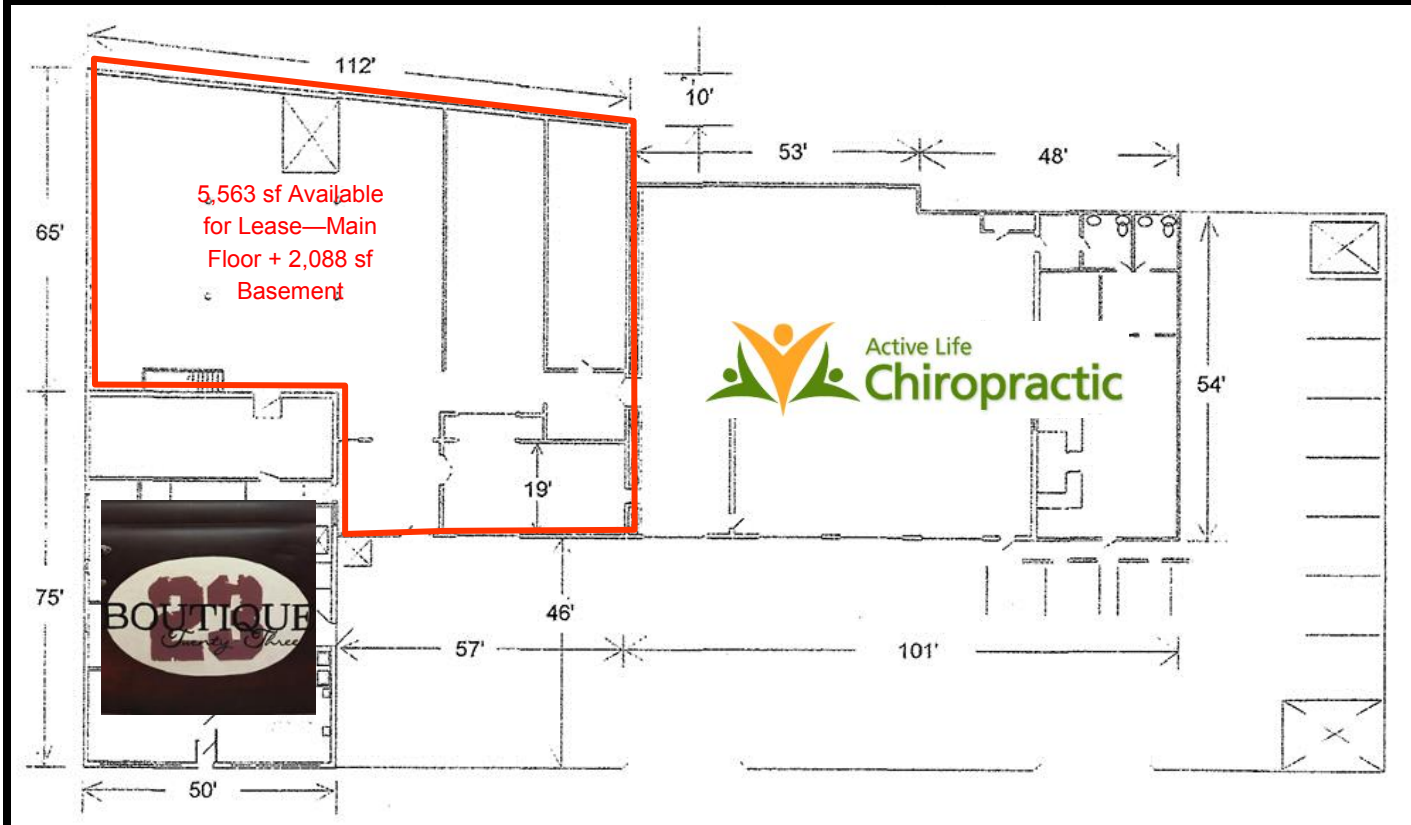
[DanielCompanies.com](http://DanielCompanies.com)



**Main Floor**



**Basement**



**- Space Available: 5,563 sf  
+ 2,088sf Basement In-  
cluded**

- Lease Rate: \$5 psf = \$2,218/mo. + utilities, & int. maintenance
- Min 5 Yr. Lease
- Zoned Downtown Core
- High Visibility on Main Ave.
- Prime Brew-Pub or Retail

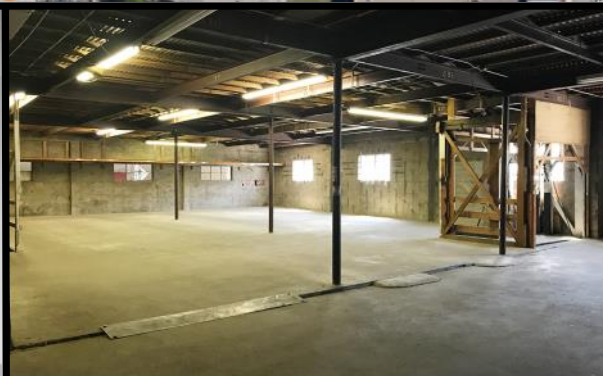
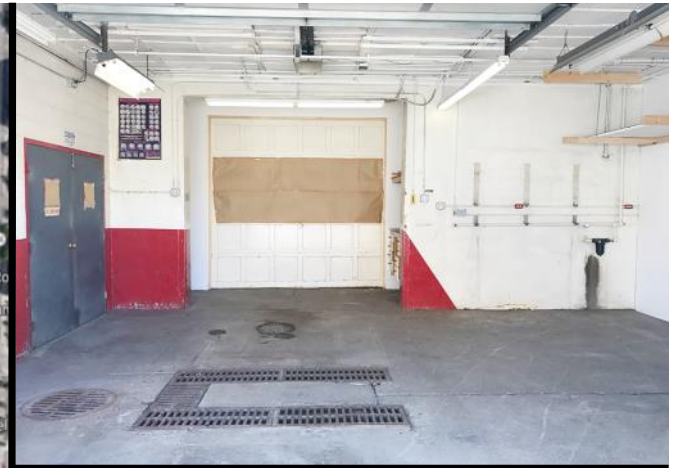
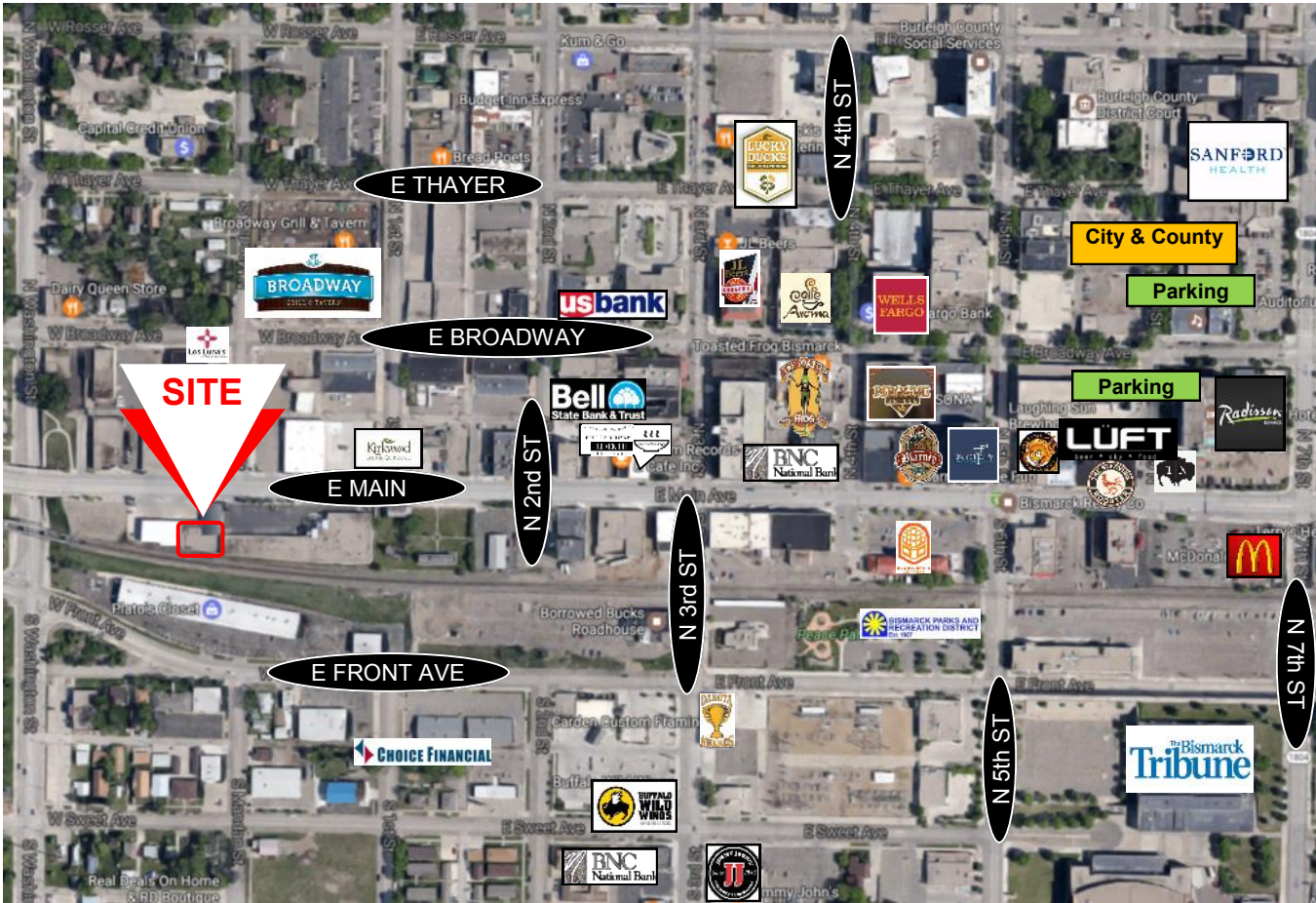
Broker does not guarantee the information describing this property. Interested parties are advised to independently verify the information through personal inspectors or with appropriate professionals.



**Taylor Daniel, Commercial REALTOR**  
701.391.4262  
[Taylor@DanielCompanies.com](mailto:Taylor@DanielCompanies.com)

**Bill Daniel, CCIM, Broker**  
701.220.2455  
[Bill@DanielCompanies.com](mailto:Bill@DanielCompanies.com)

**DanielCompanies.com**





# DANIEL COMPANIES

The Leader in Commercial Real Estate

Serving commercial real estate clients with unmatched market knowledge, experience, and a well-deserved reputation for integrity. They know the Bismarck-Mandan commercial real estate market better than anyone. This powerful team delivers powerful results.



**Bill Daniel, CCIM, Broker**  
701.220.2455  
Bill@DanielCompanies.com



**Kyle Holwagner, CCIM, SIOR**  
701.400.5373  
Kyle@DanielCompanies.com



**Taylor Daniel, Commercial REALTOR®**  
701.391.4262  
Taylor@DanielCompanies.com

701.223.8488  
304 E ROSSER AVE #200  
BISMARCK, ND 58501



ICSC CCIM SIOR  
INDIVIDUAL MEMBERS

RETAIL • INVESTMENTS • OFFICE • INDUSTRIAL • SITE SELECTION • LEASING • BUILD TO SUIT • BROKERAGE