

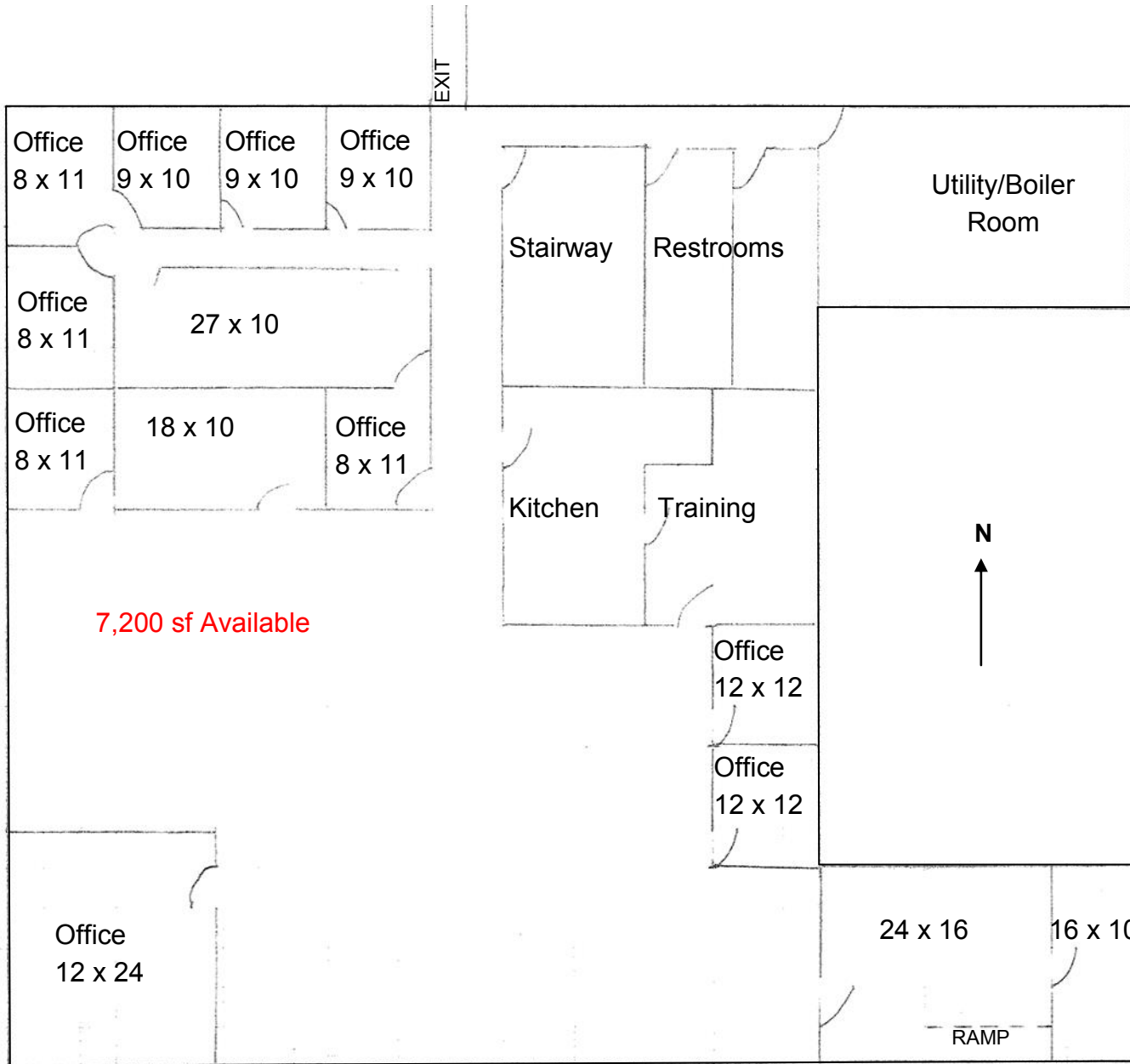
Office Space - 2nd Floor

2400 E Broadway Ave - Bismarck, ND



Kyle Holwagner, CCIM, SIOR
701.400.5373
Kyle@DanielCompanies.com

DanielCompanies.com



2nd Floor: 7,200 sf Available

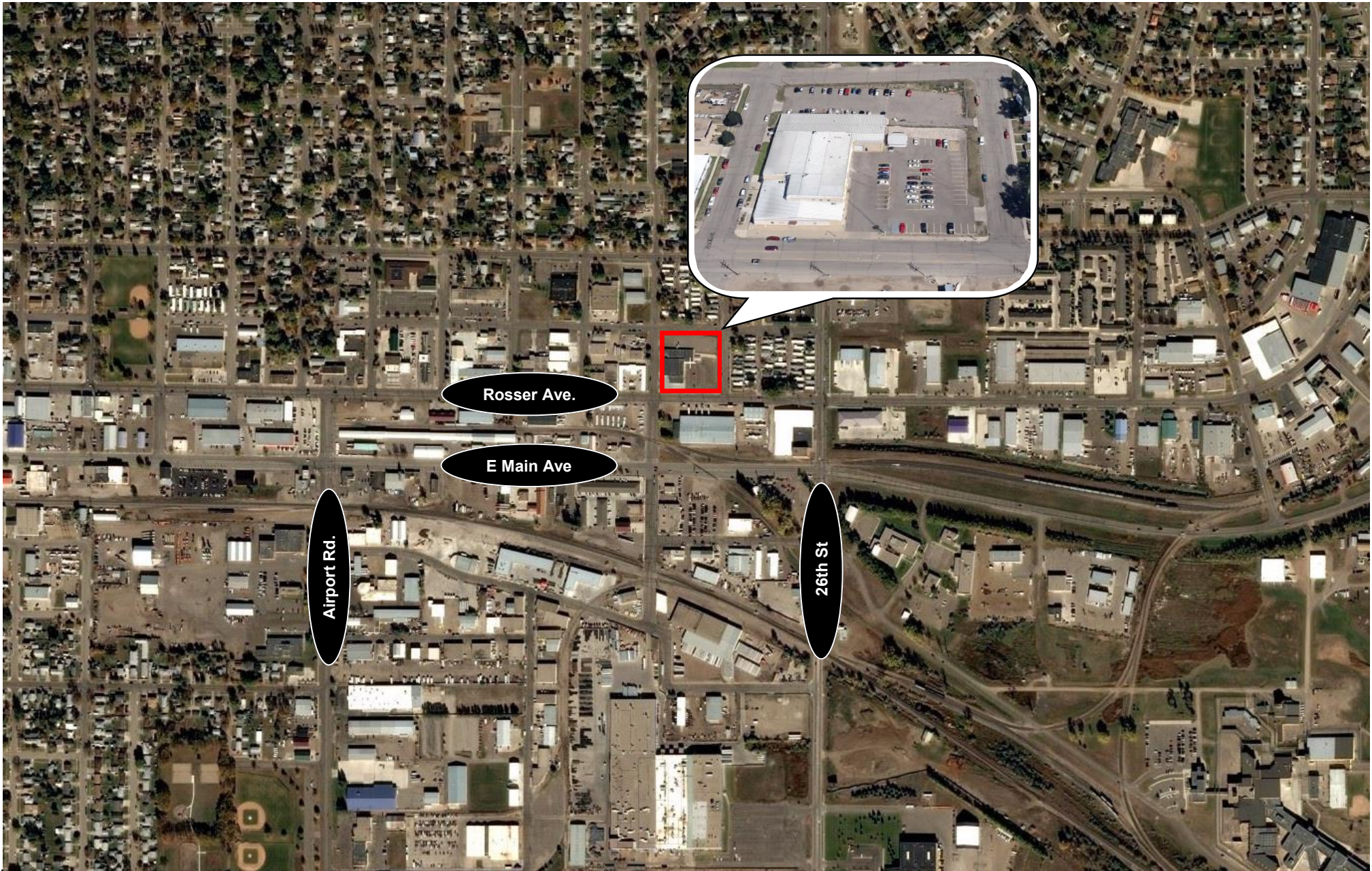
- Lease: \$12.00 psf
- Private Offices, Training Room
- Kitchen, Conference Room
- Full Service Lease
- Off Street Parking
- Private ADA Restrooms
- Elevator
- Tenant Pays:
 Janitorial
 Light Bulbs
 Carpet Cleaning
- New Flooring & Paint
- Good Access and Great Visibility

***Not to scale, for visual purposes only. Floor Plan may vary.*



Kyle Holwagner, CCIM, SIOR
 701.400.5373
Kyle@DanielCompanies.com

DanielCompanies.com



Rosser Ave.

E Main Ave

Airport Rd.

26th St



Kyle Holwagner, CCIM, SIOR
701.400.5373
Kyle@DanielCompanies.com

DanielCompanies.com



DANIEL COMPANIES

The Leader in Commercial Real Estate

Serving commercial real estate clients with unmatched market knowledge, experience, and a well-deserved reputation for integrity. They know the Bismarck-Mandan commercial real estate market better than anyone. This powerful team delivers powerful results.



Bill Daniel, CCIM, Broker
701.220.2455
Bill@DanielCompanies.com



Kyle Holwagner, CCIM, SIOR
701.400.5373
Kyle@DanielCompanies.com



Taylor Daniel, Commercial REALTOR®
701.391.4262
Taylor@DanielCompanies.com

701.223.8488
304 E ROSSER AVE #200
BISMARCK, ND 58501



ICSC CCIM SIOR
INDIVIDUAL MEMBERS

RETAIL • INVESTMENTS • OFFICE • INDUSTRIAL • SITE SELECTION • LEASING • BUILD TO SUIT • BROKERAGE